



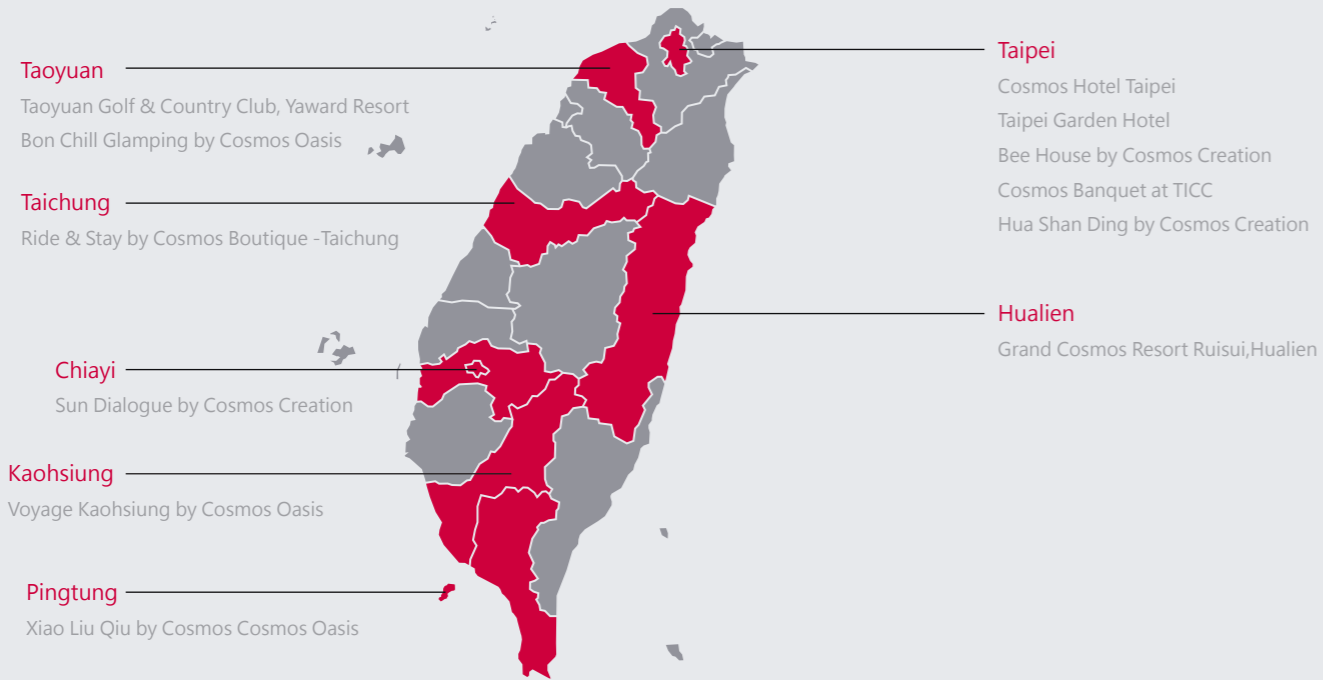
COSMOS
HOTELS & RESORTS
天成飯店集團

天成飯店集團
COSMOS HOTEL & RESORTS

 COSMOS HOTELS & RESORTS 天成飯店集團 www.tw-cosmos.com	頂級 奢華 GREAT LUXURY	 天合 GRAND COSMOS 博愛世界國際觀光度假區 GRAND COSMOS RESORT	精緻 體驗 EXQUISITE EXPERIENCE	 COSMOS OASIS 天成度假 朋趣 Bon Chill Glamping 遊琉球 Voyage Kaohsiung 跨界 精品 CROSSOVER BOUTIQUE	 天成丰閣 TIAN CHENG BANQUET	 RUBI & STAY 天成丰閣
	客製 設計 CUSTOMIZED CREATION	 COSMOS CREATION 天成文旅 SUN DIALOGUE HOTEL HUA SHAN DING Bee House	城市 經典 URBAN CLASSIC	 天成大飯店 COSMOS HOTEL GARDEN HOTEL 特色 精選 SPECIAL SELECT	 世寶國際會館 桃園高爾夫俱樂部 悅華大酒店 世寶國際會館	

- | | | | | |
|---|--|---|--|---|
| Cosmos Hotel Taipei
+886-2-2361-7856
No. 43, Sec. 1, Zhongxiao W. Rd.,
Zhongzheng Dist. Taipei City 100,
Taiwan (R.O.C.) | Cosmos Banquet at TICC
+886-2-2720-8008
No. 1, Sec. 5, Xinyi Rd., Xinyi Dist.,
Taipei City 110, Taiwan (R.O.C.) | Taipei Garden Hotel
+886-2-2314-6611
No. 1, Sec. 2, Zhonghua Rd.
Zhongzheng Dist., Taipei City
100, Taiwan (R.O.C.) | Taoyuan Golf & Country
Club, Yaward Resort
+886-3-480-3388
No. 100, Yuehua Rd., Longtan Dist.,
Taoyuan City 325, Taiwan (R.O.C.) | Grand Cosmos Resort
Ruisui, Hualien
+886-3-887-6000
No. 368, Sec. 2, Wenquan Rd.,
Ruisui Township, Hualien County 978,
Taiwan (R.O.C.) |
| Bee House by
Cosmos Creation
+886-2-2559-9000
No. 57, Taiyuan Rd.,
Datong Dist., Taipei City 103, Taiwan
(R.O.C.) | Sun Dialogue by
Cosmos Creation
+886-5-275-9899
No. 888, Sec. 1, Daya Rd.,
East Dist., Chiayi City 600,
Taiwan (R.O.C.) | Hua Shan Ding by
Cosmos Creation
+886-2-2351-5188
No. 79, Sec. 2, Zhongxiao E. Rd.,
Zhongzheng Dist., Taipei City 100,
Taiwan (R.O.C.) | Bon Chill Glamping by
Cosmos Oasis
+885-3-480-1369
No. 100, Yuehua Rd., Longtan
Dist., Taoyuan City 325, Taiwan
(R.O.C.) | Voyage Kaohsiung
by Cosmos Oasis
886-7-216-3003
No. 38, Wufu 3rd Rd., Qianjin Dist.,
Kaohsiung City 801, Taiwan (R.O.C.) |

MANAGEMENT STRATEGY



13 Hotel brands	1235 Rooms		25 Restaurant brands	1 27 Hole golf course
Grand Luxury 「GRAND COSMOS」	Urban Classics 「COSMOS HOTEL」	Customized Design 「COSMOS CREATION」	「SPECIAL SELECT」	Crossover Boutique 「COSMOS BOUTIQUE」
Grand Cosmos Resort Ruisui,Hualien	Cosmos Hotel Taipei Taipei Garden Hotel	Sun Dialogue by Cosmos Creation Hua Shan Ding by Cosmos Creation Bee House by Cosmos Creation	Cosmos Banquet at TICC Taoyuan Golf & Country Club, Yaward Resort	Ride & Stay by Cosmos Boutique -Taichung
				Exquisite Experience 「COSMOS OASIS」
				Bon Chill Glamping by Cosmos Oasis Voyage Kaohsiung by Cosmos Oasis Xiao Liu Qiu by Cosmos Cosmos Oasis

The Cosmos Hotels & Resorts has evolved from self-constructed and self-owned hotel properties to establishing a brand and building up professional management expertise, transforming into a comprehensive and well-rounded hotel management group. Cosmos Hotels & Resorts comprises four major business entities: hospitality businesses, off-site F&B, golf course, and real estate development. Each entity upholds core values of "diversity, unity, community and sustainability" and a service ethos of thoughtfulness and warmth encapsulated in the motto "Thoughtful in Every Detail, Warmth in your Heart." These values and spirit are aimed at meeting the diverse needs of customers at all levels, and they are dedicated to providing consumers with meticulous service and profoundly wonderful experiences.

The Cosmos Group owns 17 brands and 13 revenue-generating hotel properties, showcasing our determined effort to actively expand our business footprint. Since inception, the Cosmos Hotels and Resorts has been able to leverage its seasoned hotel management experiences and exceptional business performance to serve international and domestic travelers alike. Adopting a multi-brand strategy, we establish partnerships with investors to launch new hotel projects, and to invite franchise and operational management opportunities. In response to the current development status of the group and to cater to various customer segments through differentiated market positioning, an appropriate brand development strategy has been formulated. The group has established a six-brand series structure to meet the needs of a comprehensive customer base, which includes: Grand Luxury: 「GRAND COSMOS」, Urban Classics: 「COSMOS HOTEL」, Crossover Boutique 「COSMOS BOUTIQUE」 Customized Design: 「COSMOS CREATION」, 「SPECIAL SELECT」, EXQUISITE EXPERIENCE. The Cosmos Hotel Group employs its core methodology, the "Script Method," in hotel development to reduce investment risks and establish a multi-stakeholder communication platform. This approach aligns with property owners' preferences while formulating operational strategies that also account for market positioning.

Using a timeline-based concept, the method identifies key customer roles and employs tools such as scriptwriting, storyboard sketching, and video production. From hardware design to service delivery, every stage ensures that the "design team, property owners, operational teams, and service staff" remain on the same communication platform. The "Script Method" minimizes unnecessary opportunity costs and, through iterative communication and refinement, creates a hotel experience for guests that is rich in culture, history, and unique differentiation.

Grand Luxury 「GRAND COSMOS」

Grand Cosmos Resort Ruisui,Hualien

Exquisite Experience 「COSMOS OASIS」

Bon Chill Glamping by Cosmos Oasis
Voyage Kaohsiung by Cosmos Oasis
Xiao Liu Qiu by Cosmos Cosmos Oasis

Urban Classics 「COSMOS HOTEL」

Cosmos Hotel Taipei
Taipei Garden Hotel

Customized Design 「COSMOS CREATION」

Sun Dialogue by Cosmos Creation
Hua Shan Ding by Cosmos Creation
Bee House by Cosmos Creation

SPECIAL SELECT

Cosmos Banquet at TICC
Taoyuan Golf & Country Club, Yaward Resort

Crossover Boutique 「COSMOS BOUTIQUE」

Ride & Stay by Cosmos Boutique -Taichung



6
Restaurants

198
Rooms



1
Restaurants

71
Rooms



5
Restaurants

241
Rooms



1
Restaurants

72
Rooms



5
Restaurants

226
Rooms



2
Restaurants

31
Rooms



1
Restaurants

11
Private rooms



1
Restaurants

72
Rooms



4
Restaurants

76
Rooms



2
Restaurants

28
Rooms

1
Restaurants

71
Rooms

2
Restaurants

31
Rooms

3
Restaurants

30
Luxury Caravan

1
Restaurants

72
Rooms

2
Restaurants

155
Rooms

2
Restaurants

28
Rooms



COSMOS HOTEL TAIPEI

Cosmos Hotel Taipei is located next to Exit M3 of the Taipei Station MRT stop, Taipei's main transportation hub. In addition to its prime location, the hotel boasts a total of 226 comfortable rooms. Jade restaurant is well-known for its Jiangsu and Zhejiang cuisine, as well as Hong Kong-style dim sum. At Lily Restaurant, customers can enjoy European-style dining and afternoon tea. Hanabby Bakery, all the breads and pastries are made fresh daily in Japanese, European and Taiwanese styles. Hiding on the top floor, 17 Cafe Lounge is the best spot to see Taipei city view. Try a cup of delicate coffee during business trip, the mellow flavor inspires you better ideas. 17 Cafe To Go only establishment in Taiwan that specializes in serving coffee roasted in-house by a star-rated hotel, featuring internationally certified baristas. Locally roasted for freshness, the coffee is meticulously tailored to match the unique characteristics and flavors of each bean, selecting the ideal roast level to deliver a richly balanced and nuanced taste experience. The specialty counter also features an array of curated souvenirs, enriching the travel experiences of visitors.

Banquet Hall/The maximum capacity of the private room is 42 tables/The total number of tables is 130.

	International Hall	Cheer Banquet Room	Jade Banquet Hall	May Banquet Room
Number of tables that can be accommodated	42 tables	27 tables	27 tables	10 tables
Classroom Style	120 people	99 people	66 people	72 people

**Number of Restaurants/5 restaurants
(Jade restaurant, Lily Restaurant, Hanabby Bakery, 17 Cafe Lounge, 17 Cafe To Go)**

Location /

Cosmos Hotel Taipei is conveniently located next to Taipei Main Station, making it an ideal choice for independent travelers exploring the city. It is close to popular attractions such as the Ximending Shopping District, Chiang Kai-Shek Memorial Hall, and Huashan 1914 Creative Park. With easy access to the MRT, guests can effortlessly visit Taipei 101, the Xinyi Commercial District, Shilin Night Market, Ningxia Night Market, Yongkang Street, Longshan Temple in Wanhua, and Huaxi Street Tourist Night Market, among other renowned Taipei destinations.

Number of rooms /226 Rooms

Pricing (The following room rates are subject to 10% service charge)

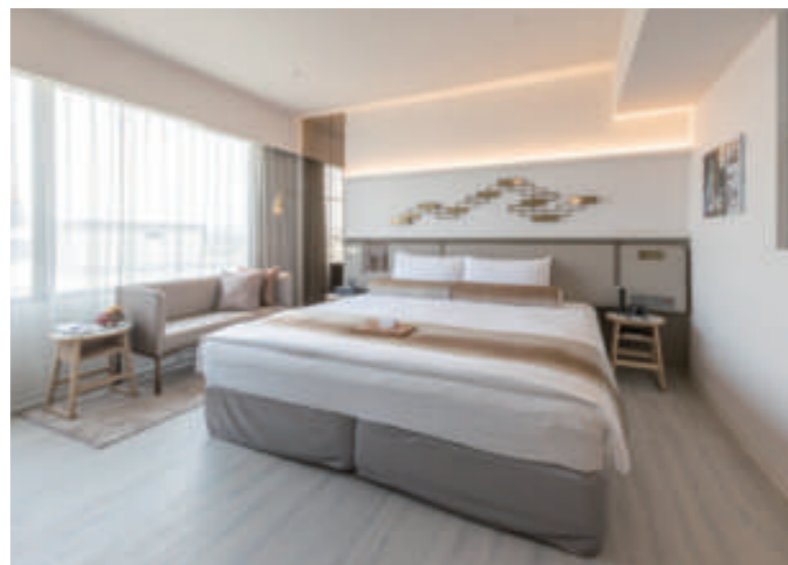
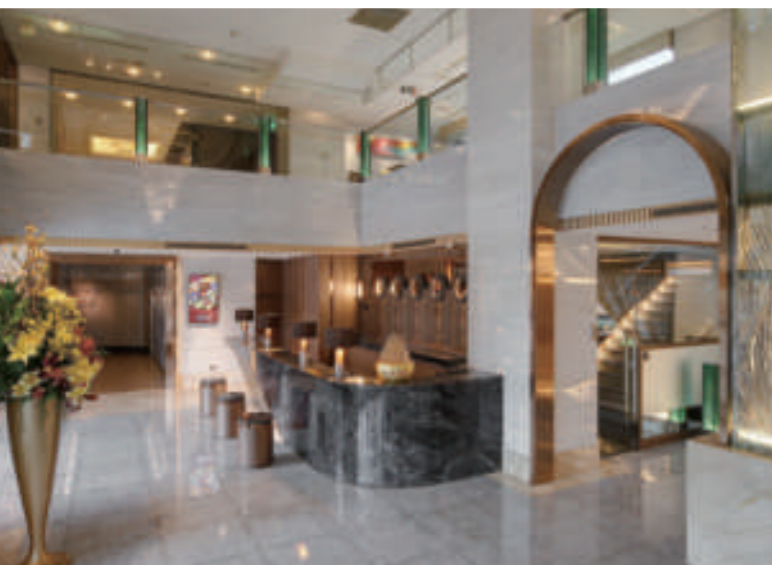
Superior	Executive Deluxe	Deluxe Twin (No Window)	Family Triple	Deluxe Triple	
NT\$11,500 1 double bed or 2 single beds	NT\$12,000 1 double bed	NT\$12,000 2 double beds	NT\$13,500 1 double bed and 1 single bed	NT\$13,600 3 single beds	
Family Quad	Deluxe Quad	VIP Room	Junior Suite	Deluxe Suite	Cosmos Suite
NT\$14,500 2 double beds	NT\$15,000 2 double beds	NT\$13,600 1 double bed	NT\$13,500 1 double bed	NT\$20,000 1 double bed	NT\$14,500 1 double bed



Phone / +886-2-2361-7856

Fax / +886-2-2311-8921

Address / No. 43, Sec. 1, Zhongxiao W. Rd., Zhongzheng Dist., Taipei City 100, Taiwan (R.O.C.)



TAIPEI GARDEN HOTEL

The Taipei Garden Hotel is the only Five-star hotel in the Ximending. The hotel is equipped with 241 well-appointed, comfortable guestrooms and various amenities such as fusion restaurants offering Chinese/Western cuisines, With "Travel in Longshan Temple and Ximending" as the theme of the hotel and combining it with the vocabulary of Bangka boat, enthusiasm and cultural implications are created through design techniques. As well as a great selection of dining options, including To-Gather Kitchen that serves a fusion of Western and Asian cuisine, the popular Taipei Garden Café Toast & Thai, PRIME ONE Steak House and Hanabby Bakery. Also available are a large pillar-free multi-purpose banquet hall with 7-meter ceilings, several fully customizable, self-contained conference rooms, and well equipped business center and fitness center. Our goal is to offer you a comfortable stay and a delightful dining experience.

Banquet Hall/ 10 Private rooms. The maximum capacity of the private room is 38 tables/ The total number of tables is 78.

	International Hall	Lily Room	Rosa Room	Calla Room	Daffodil Room	Rose Room	Tail Flower Room
Number of tables that can be accommodated	38 tables	13 tables	13 tables	2 tables	2 tables	4 tables	3 tables
Classroom Style	280 people	120 people	120 people	21 people	21 people	30 people	30 people
	Jasmine Room	Camellia Room	Peony Room	Cherry Blossoms Room	Flora Room	VIP Room	
Number of tables that can be accommodated	3 tables	8 tables	17 tables	6 tables	5 tables	5 tables	
Classroom Style	30 people	51 people	100 people	42 people	24 people	51 people	

Number of Restaurants/5 restaurants (To-Gather Kitchen/Jade restaurant, Taipei Garden Café Toast & Thai, Hanabby Bakery, Prime One Steak House)

Number of rooms /241 Rooms

Pricing (The following room rates are subject to 10% service charge)

Premier Double Room	Premier Family Room	Premier Triple Room	Premier Quad Room	Luxury Room	Deluxe Suite	Garden Suite
NT\$16,000	NT\$20,000	NT\$20,800	NT\$22,500	NT\$19,000	NT\$26,800	NT\$32,800
1 double bed or 2 single beds	1 double bed and 1 single bed	3 single beds	2 double beds	1 double bed	1 double bed	1 double bed

Location /

Location/Taipei Garden Hotel is located in a major transportation hub with easy access to nearby shopping and business districts. Within the vicinity are popular tourist destinations such as the Presidential Office, CKS Memorial Hall, Ximending Pedestrian Mall, Longshan Temple, and Huaxi Street Tourist Night Market. Taipei Main Station is just a 5-minute' s car ride away, while the Xiaonanmen and Ximending MRT stations are just 3 and 7 minutes' walk away, respectively. Whether you are in Taipei for business or on holiday, Taipei Garden Hotel is sure to provide a pleasant and memorable stay.



Phone / +886-2-2314-6611

Fax / +886-2-2314-5511

Address / No. 1, Sec. 2, Zhonghua Rd., Zhongzheng Dist., Taipei City 100, Taiwan (R.O.C.)



Bee House
蜂巢 | 天成文旅



HUA SHAN DIN
華山町 | 天成文旅



BEE HOUSE BY COSMOS CREATION

Bee House by Cosmos Creation is a designer hotel gathered with local spirits at the commercial circle located behind Taipei Station, surrounded by Dadaocheng and Dihua Street, which are filled with historical & cultural sentiment, as well as the Ningxia Night Market representing local night market dining culture. Cosmos Creation Hotels – Bee House was formerly an old building. It has kept the original looks of Bagua windows from Ruism and the hexagonal structure of a beehive, Bee House by Cosmos Creation has six stories and 31 well appointed guestrooms, Furthermore, in order to cater to our guests' every need, we have created Internet services in the lobby together with other facilities, providing each traveler with a cozy accommodation space resembling bees returning home under the fusion of new and old elements, along with offering a relaxed ambiance and comprehensively sweet services to allow each traveler to have their memory of an unforgettable accommodation experience.

Number of Restaurants/2 restaurants (GARDEN CAFÉ /Instant Noodle Bar 24h)

Location /

Bee House is located at the heart of the Taipei Rear Station Shopping District, close to Taiwan Railways, THSR, MRT or Airport MRT (scheduled to be opened in 2015), coach and bus services. Walking from the hotel to the Taipei Main Station and MRT station only takes 8 minutes, while Taipei 101 and World Trade Center are only just 25 minute away by car. Other attractions such as the Taipei Rear Station Shopping District, MOCA Taipei, Q square, Dihua Street Shopping District, Ximending Shopping District and Ningxia Tourist Night Market etc. are also in the vicinity. Consequently, whether you are here for business or pleasure, we are the best choice for travelers!

Number of rooms /31 Rooms

Pricing (The following room rates are subject to 10% service charge)

Economic Room	Superior Room	Deluxe Triple Room
NT\$8,000 1 double bed	NT\$8,000 1 double bed or 2 single beds	NT\$9,600 1 double bed and 1 single bed or 3 single beds



Phone / +886-2-2559-9000
Fax / +886-2-2550-3300
Address / No. 57, Taiyuan Rd., Datong Dist., Taipei City 103, Taiwan (R.O.C.)

HUA SHAN DIN BY COSMOS CREATION

HUA SHAN DIN BY COSMOS CREATION

Hua Shan Din by Cosmos Creation is the third themed hotel in the Cosmos Creation series with a specialized local design concept. Located next to the Huashan 1914 Creative Park, the hotel retained the original beamless architectural design, and is a building of rich historical significance, with its interior design incorporating the banking and the brewery cultures of its past.

The Hua Shan Din by Cosmos Creation hotel site was originally built in 1952 as a warehouse for the First Commercial Bank. The theme of the hotel is based upon the concept of "Saving and storing Huashan 1950." To break down the concept: The 50' s was the golden era of the Taipei Brewery; the word "saving" implies a symbolic connection with the banking industry; and the word "storing" points to Huashan' s past as a site for producing and storing alcohol during the time of Japanese occupation.

Number of Restaurants/1 restaurants (Hua Shan Din Cafe x Bar)

Location /

Hua Shan Din by Cosmos Creation is located next to the Hua Shan 1914 Creative Park, which is the center of the arts and cultural scene in Taipei, with a high concentration of trendy cafes and restaurants. This is the ideal choice of accommodation for an in-depth exploration of Taipei' s arts and culture. The hotel is about a 4 minute walk to the nearest MRT station, transferring to well-known tourist attractions such as Ximending, Xinyi Commercial District, Shilin Night Market, Ningxia Night Market, and Yongkang Street Shopping Area is extremely convenient.



Phone / +886-2-2351-5188
Fax / +886-2-2351-5678
Address / No. 79, Sec. 2, Zhongxiao E. Rd., Zhongzheng Dist., Taipei City 100, Taiwan (R.O.C.)

Number of rooms /72 Rooms

Pricing (The following room rates are subject to 10% service charge)

Standard Twin Room	Standard Triple Room	Standard Quad Room
NT\$12,000 1 double bed or 2 single beds	NT\$12,800 3 single beds	NT\$13,600 4 single beds (bunks)
Superior Twin Room	Superior Triple Room	Superior Quad Room
NT\$13,000 1 double bed or 2 single beds	NT\$14,000 3 single beds	NT\$14,800 2 double beds



SUN DIALOGUE BY COSMOS CREATION

Sun Dialogue By Cosmos Creation its bright white geometric design of the exterior expresses fluidity in style with an art museum-like elegance, while the guest rooms are injected with pops of bright colors to inspire a lively energy. Through creative and imaginative design and artwork, A-Li Mountain' s iconic beauty is able to permeate every corner of the hotel' s public space and guest rooms – its breathtaking sunrise, mesmerizing mountain mist, and majestic Cypress Pines – which further invokes a sense of pleasant amenity from guests and travelers. Furthermore, the Sun Dialogue by Cosmos Creation aims to target the family market with its abundant display art and design that will draw out the inner child in everyone.

Number of Restaurants/1 restaurants (Sun Dialogue Café)

Location /

Location/The location of Sun Dialogue By Cosmos Creation is exceptionally convenient, with nearby attractions that are truly eye-catching and captivating. The first ray of sunlight over the mountain,the lunar eclipse over the lake;the Tropic of Cancer stretching, extending,through historic parks and alleys.don' t forget all the tasty street fare,Chiayi is sure to set your heart aflutter.

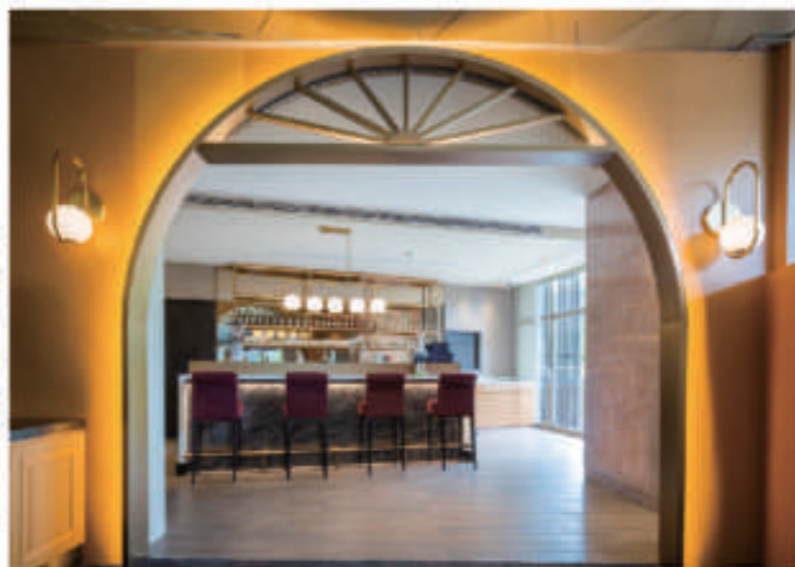
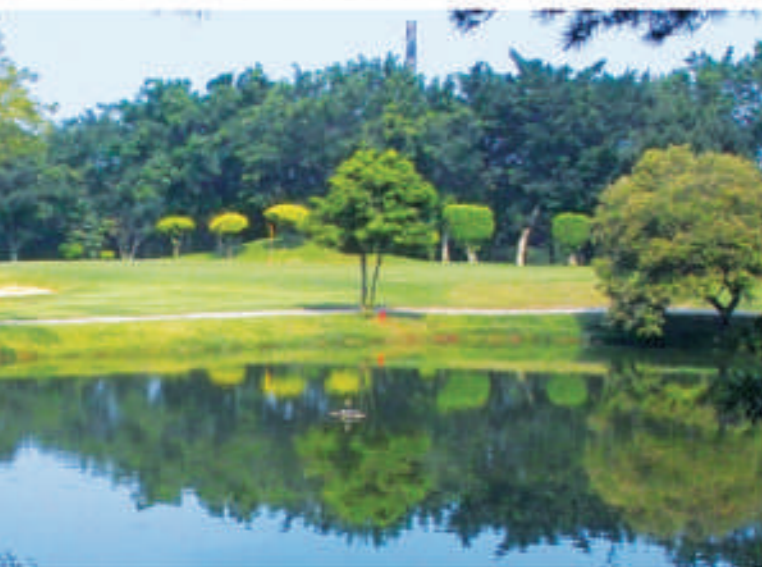


Phone / +886-5-275-9899
Fax / +886-5-275-8799
Address / No. 888, Sec. 1, Daya Rd., East Dist., Chiayi City 600, Taiwan (R.O.C.)

Number of rooms /71 Rooms

Pricing (The following room rates are subject to 10% service charge)

Economy Room NT\$6,200 1 double bed	Superior Room NT\$7,200 1 double bed or 2 single beds	Family Triple NT\$8,200 1 double bed and 1 single bed or 3 single beds	Superior Quad Room NT\$8,800 2 double beds	Economy Quad Room NT\$8,800 2 double beds	Family Quad NT\$9,200 2 double beds
Leisure Superior Room NT\$9,500 1 double bed or 2 single beds	Deluxe Quad Room NT\$13,000 2 double beds or 1 double bed and 2 single beds	Leisure Premier Room NT\$13,500 1 double bed or 2 single beds	Leisure Triple Room NT\$14,000 1 double bed and 1 single bed	Grand Deluxe Quad Room NT\$15,000 1 double bed and 2 single beds	
Leisure Quad Room NT\$15,000 2 double beds	Leisure Deluxe Room NT\$15,000 1 double bed and 1 single beds	Family Slide Quad NT\$20,000 2 double beds	Deluxe Suite NT\$26,000 2 double beds		



TAOYUAN GOLF& COUNTRY CLUB, YAWARD RESORT

TAOYUAN GOLF& COUNTRY CLUB, YAWARD RESORT

Taoyuan Golf & Country Club is a three-section, 27-hole golf course. The first hole in the East District is 760 yards with par 6; it is the longest fairway in Asia. The Yaward Hotel is located inside the golf course; it has 61 exquisite guestrooms combined with comprehensive recreational facilities such as a golfing range, outdoor swimming pool and gym, where guests can be immersed in Mother Nature's fresh air and phytoncides to enjoy a relaxing, joyous vacation.

Banquet Hall/ 7 Private rooms./The total number of tables is 87.

	Banquet Hall	International Hall	Socia Room	White cloud Room	Yaward Room	Space green Room	Blue sky Room	VIP Room
Number of tables that can be accommodated	33 tables	22 tables	14 tables	6 tables	6 tables	2 tables	2 tables	2 tables
Classroom Style		120 people	90 people	40 people	30 people			

Number of Restaurants/4 restaurants (Sunny Cafe, Jade, Bon Bar, Snack Store)



Phone / +886-3-480-3388

Fax / +886-3-489+-4350

Address / No. 100, Yuehua Rd., Longtan Dist., Taoyuan City 325 ,Taiwan (R.O.C.)

Number of rooms /76 Rooms

Pricing (The following room rates are subject to 10% service charge)

Superior Room	Family Triple Room	Family Quad Room	Yaward Suite	Deluxe Room	Superior Penthouse	Family Triple Penthouse	Family Quad Penthouse
NT\$7,600	NT\$9,500	NT\$11,000	NT\$15,000	NT\$9,000	NT\$9,600	NT\$11,000	NT\$13,000
1 double bed or 2 single beds	1 double bed and 1 single bed	2 double beds	1 double bed	1 double bed or 2 single beds	1 double bed or 2 single beds	1 double bed) and 1 single bed or 3 single beds	2 double beds or 4 single beds

Location/

Located right next to Taipei City, this destination is a premier spot for vacation, sports, and leisure. It is easily accessible from the Daxi Interchange (southbound) and Longtan Interchange (northbound) on National Freeway No. 3, with just about a 10-minute drive after exiting the highway. It takes approximately 40 minutes by car from Taoyuan International Airport and around 60 minutes from Taipei Songshan Airport. Surrounded by lush mountains and offering breathtaking views of tree-lined fairways, it's a serene retreat that's easy to reach.



Bon Chill Glamping by Cosmos Oasis

“Bon Chill Glamping by Cosmos Oasis” is an all-new glamping experience brand under the Cosmos Hotels & Resorts Group. The name was inspired by wild and cute squirrels in the area, and is derived from the Taiwanese pronunciation for squirrels, “phòng-tshí”. As the site is located next to the Taoyuan Golf Course, the two attractions have been combined to form the theme “Play Golf, Stay at Bon Chill”. Combined with the most trendy glamping luxury campervan experience, we welcome guests to experience natural ecology, blue skies and lush greenery on our grounds, and provide comfortable rest and dining through all-inclusive services, exclusive squirrel smart butler services, stunning poolside bar and an outdoor movie theater under the starry skies. An outdoor kid’s playground and a golf experience is also available. Come stay at Bon Voyage, where we create endless imaginations of luxury camping and memorable vacations.

Number of Restaurants/3 restaurants (Sunny Cafe, Bon Bar, Snack Store)



Phone / +886-3-480-1369
Fax / +886-3-489+-4350
Address / No. 100, Yuehua Rd., Longtan Dist., Taoyuan City 325 ,Taiwan (R.O.C.)

Number of rooms /30 Luxury Caravan

Pricing (The following room rates are subject to 10% service charge)

Libby Caravan	Twilight Caravan	Bon-cloud Caravan	Shooting Stars Caravan	Pegasus caravan
NT\$19,000	NT\$22,000	NT\$27,600	NT\$28,000	NT\$30,000
1 double bed	1 double or 1 double bed and 1 sofa bed	1 double bed and 2 twin beds	1 double bed and 1 sofa bed	2 double beds

Location /

A vacation and leisure destination located right next to Taipei City, easily accessible via the Daxi Interchange (southbound) and Longtan Interchange (northbound) on National Freeway No. 2. It takes about 10 minutes to reach the destination after exiting the interchange. The drive from Taoyuan International Airport takes approximately 40 minutes, while it’s about a 60-minute drive from Taipei Songshan Airport. Visitors can effortlessly arrive at the Bon Chill Experience Luxury Campervans, which offer a luxurious and refined vacation experience combined with a golf course.



瑞穗天合國際觀光酒店
GRAND COSMOS RESORT
Ruisui-Hualien



GRAND COSMOS RESORT RUISUI, HUALIEN

Received a "5-star rating" from the Ministry of Tourism Administration, M.O.T.C. The Grand Cosmos Resort Ruisui, Hualien is located on a 20,000-ping property in Hualien County, and is Cosmos Hotels & Resorts' latest vacation hotspot. It is the first hotel in Taiwan that offers accommodation choices of luxury villas, a hot spring water park, and spa all in one complex. The hotel is designed in southern European cottage style, and is set in the beautiful Hualien region with rich cultural characteristics and spectacular natural beauty.

Banquet Hall/The total number of tables is 60/ Interactive Hall is 244 seats

	International Banquet Hall	Monet Hall	Matisse Hall	Raffaello Hall	Michelangelo Hall	Donatello Hall	Da Vinci Hall
Number of tables that can be accommodated	60 tables	35 tables	25 tables	1 tables	1 tables	1 tables	1 tables
Classroom Style	350 people	202 people	148 people	12 people	20 people	20 people	20 people

Number of Restaurants/6 restaurants (Fontaine Cuisine, Music Bar, PRIME ONE Steak House, Mansion Bar, Pool Side Bar, Ruisui Café)

Location /

Location/The Grand Cosmos Resort Ruisui, Hualien is located in the hot spring development area near Ruisui Railway Station in Hualien. Surrounded by the beauty of lush mountains, it is adjacent to the East Rift Valley National Scenic Area, Ruisui Ranch, Wuhe Scenic Area, Xiuguluan River, Tropic of Cancer Marker Park, and other popular tourist attractions. Here, visitors can immerse themselves in breathtaking scenery and experience the wonders of nature.



Phone / +886-3-887-6000
Fax / +886-3-887-1000
Address / No. 368, Sec. 2, Wenquan Rd., Ruisui Township, Hualien County 978, Taiwan (R.O.C.)

Number of rooms /198 Rooms

Pricing (The following room rates are subject to 10% service charge)

Castle	Superior Room	Family Quad	Grand Deluxe Quad Room	Family Suite	Deluxe Suite	
	NT\$32,000 1 double bed or 2 single beds 1 sitting area and 1 hot spring tub	NT\$40,000 2 double beds 1 sitting area and 1 hot spring tub	NT\$40,000 2 double beds 1 living room and 1 hot spring tub	NT\$88,000 2 double beds and 1 bunk bed 2 hot spring tubs	NT\$88,000 1 double bed 1 sitting area 1 living room 1 dining room 1 hot spring tub	
Mansion	Superior Room	Superior Quad Room	Family Quad Room	Deluxe Quad Room	Grand Deluxe Quad Room	Family Suite
	NT\$36,000 1 double bed and 1 hot spring tub	NT\$48,000 2 double beds 1 sitting area and 1 hot spring tub	NT\$48,000 2 double beds 1 living room and 1 hot spring tub	NT\$56,000 Room Type A: 2 double bed 1 living room .1 hot spring tub Room Type B: 1 double bed and 2 twin beds 1 living room .1 hot spring tub	NT\$60,000 3 double beds and 1 sitting area 2 hot spring tubs	NT\$96,000 4 double beds, 1 living room 1 dining room 2 hot spring tub
Grand Villa	Leisure Villa	Watery Villa	Superior Villa	Royal Villa	Premier Villa	Presidential Villa
	NT\$48,000 2 double beds 1 living room 1 hot spring tub	NT\$50,000 2 double beds 1 living room, 1 in-room hot spring tub and 1 outdoor pool	NT\$64,000 2 double beds 1 living room 1 in-room hot spring tub and 1 outdoor pool	NT\$280,000 1st Floor: 1 double bed, 2 living room 1 outdoor pool and backyard waterfalls 2nd Floor: 2 double beds and 2 hot spring tub	NT\$300,000 1st Floor: 1 double bed 2 living room 1 outdoor pool, and backyard waterfalls 2nd Floor: 2 double beds and 1 hot spring tub	NT\$96,000 1st Floor: 2 double beds 2 living room 1 outdoor pool, backyard waterfalls and putting greens 2nd Floor: 3 double beds, 2 hot spring tub, 2 sitting area
Family Villa - Rooms	Family Villa Quad Room	Family Villa Garden Room	Pet Villa Quad	Pet Villa Garden Room		
	NT\$52,000 2 double beds, 1 sitting area, 1 spiral slide 1 hot spring tub	NT\$52,000 2 double beds, 1 sitting area, 1 spiral slide, 1 hot spring tub, 1 backyard	NT\$52,000 2 double beds, 1 sitting area, 1 hot spring tub	NT\$52,000 2 double beds, 1 sitting area, 1 hot spring tub, 1 backyard with a doghouse.		



天成世貿國際會館
— Cosmos Banquet at TICC —
TICC 台北國際會議中心



COSMOS BANQUET AT TICC

Cosmos Banquet at TICC Located in the prime commercial district of the Taipei Main Station, Cosmos Hotel Taipei has established itself as the premier choice of accommodation with consistently high occupancy rate and distinguished dining services for over 30 years. Now for the first time, Cosmos Hotel is providing dining services in a non-hotel setting, at the TICC in Taipei' s Xin-Yi District, to showcase its ambition and aspiration to be the best in the dining industry.

Banquet Hall/ 11 Private rooms. The maximum capacity of the private room is 72 tables/ The total number of tables is 300.

	Banquet Hall	V.I.P. Room	Jade	South Lounge	North Lounge	Elegance	Joy
Number of tables that can be accommodated	72 tables	34 tables	24 tables	8 tables	8 tables	8 tables	8 tables

Location/

Location/Cosmos Banquet at TICC located within the Taipei International Convention Center, is situated in the Xinyi District, a hub of business and finance. It is conveniently accessible via Exit 2 of the "Taipei 101/World Trade Center" Station on the Tamsui-Xinyi MRT Line. The hotel is in close proximity to the World Trade Center Exhibition Hall, Taipei 101, and several department stores, and it also features a spacious underground parking lot.

**Number of Restaurants/
1 restaurants (Jade)**



Phone / +886-2-2720-8008

Fax / +886-3-2720+-8058

Address / No. 1, Sec. 5, Xinyi Rd., Xinyi Dist., Taipei City 110, Taiwan (R.O.C.)



XIAO LIU QIU BY COSMOS OASIS

Located on Xiao Liu Qiu currently under preparation
Scheduled to open in 2025

Jointly developed by Phoenix Tours and Cosmos Hotels & Resorts, this project introduces the only hotel brand on Xiao Liu Qiu under a hotel group, "Xiao Liu Qiu By Cosmos Oasis Pingtung." The hotel will highlight the island's rich natural resources and marine ecology, with the theme "Reflections of the Sea, Chasing the Sunlight." Showcasing the island's diverse and flourishing landscapes, the hotel aims to create a harmonious travel experience where humans and nature coexist.



RIDE & STAY BY COSMOS BOUTIQUE

Located in Taichung, currently under preparation
Scheduled to open in 2026

A lifestyle platform born from the essence of a hotel. Blending cross-industry collaboration with boutique concepts, the project partners with premium brands from lifestyle-related sectors. With a philosophy of theme-setting, deconstruction, design, and recreation, it is not merely a hotel but a dynamic platform. The brand's visual identity adopts a refined and stylish approach, following the principle of addition. Its core symbol, "ten," radiates outward like the intricate weaving of fabric. Targeting a demographic aged 30 to 50 with purchasing power, who value life experiences and possess a refined taste for quality, the platform integrates hotels and boutique elements to create a new travel lifestyle where 1+1 exceeds two, offering a unique value in modern living.



VOYAGE KAOHSIUNG
船寓高雄 | 天際逸集



VOYAGE KAOHSIUNG BY COSMOS OASIS

Voyage Kaohsiung by Cosmos Oasis presents a refined hospitality brand within the Cosmos Hotel Group. Whether indulging in an all-inclusive luxury glamping adventure or residing in a boutique hotel crafted from containers that reflect local culture, each Cosmos Oasis destination boasts unique and distinctive charm. Blending travel exploration, cultural immersion, artistic aesthetics, and a commitment to environmental sustainability, Cosmos Oasis offers an innovative and enriching lifestyle travel experience.

Welcome to Voyage Kaohsiung by Cosmos Oasis, where "Explore the Harbor City, Experience Exquisite Living" is our philosophy. "Voyage" embodies the essence of travel and journeys, perfectly suited for our location in the vibrant harbor city of Kaohsiung. Inspired by the harbor and shipping containers, our hotel showcases timeless, understated, new oriental aesthetics. The main structure, composed of stacked containers, boasts an elegant, pure white exterior that seamlessly blends elements of the ocean, harbor life, ships, and trading goods. Illuminated at night, it mirrors the lively buzz of the bustling harbor, resonating with travelers from all over the world who dock here to experience the unique passion, culture, and history of Southern Taiwan. Experience a memorable stay at our enchanting harbor retreat and embark on an unforgettable journey. Bon Voyage!

Location /

When you arrive in the captivating city of Kaohsiung, renowned for its rich history, culture, scenic beauty, and delectable cuisine. Come experience the vibrant atmosphere of the harbor city at Voyage Kaohsiung by Cosmos Oasis, conveniently situated in the bustling Wufu Shopping District with easy access to the city center. Nearby attractions include the Pier-2 Art Center, Dagang Bridge, Liuhe Night Market, Central Park, and



Phone / +886-7-216-3003

Fax / +886-7-216+-3008

Address / No. 38, Wufu 3rd Rd., Qianjin Dist., Kaohsiung City 801, Taiwan (R.O.C.)

Number of rooms /28 Rooms

Pricing (The following room rates are subject to 10% service charge)

Superior Room	Cosy Double Room	Premier Double Room	Family Quad Room	Deluxe Quad Room	Luxury Suite
NT\$12,000 1 double bed	NT\$12,000 1 double bed	NT\$12,800 1 double bed or 2 single beds	NT\$18,500 2 double beds	NT\$18,800 2 double beds	NT\$18,800 1 double bed